



NDT Workshop – Manufacturers perspective

Robert Ernst
ROERN@VESTAS.COM

Public

Agenda

Contents:

Introduction	3-4
Typical Flaws	5
NDT Processes	6
NDT Challenges, Bond issues	6-8
NDT Challenges, Wrinkle issues	9-11
NDT Challenges, Case study	12-14
Questions & Answers	15

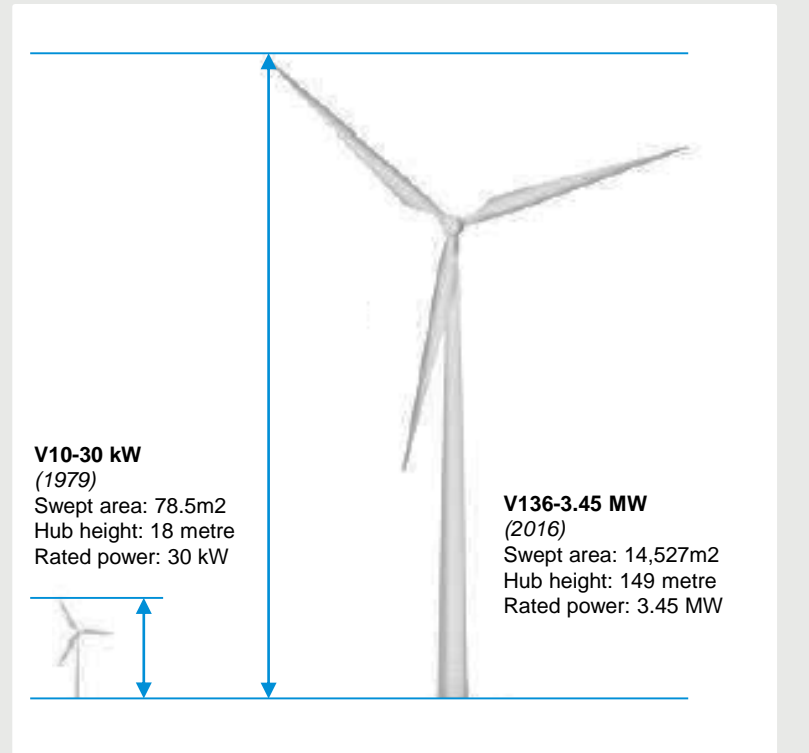
Introduction

Setting the picture

Vestas has been a pioneer in wind energy solutions since 1979. In late 2018, a new milestone was reached:

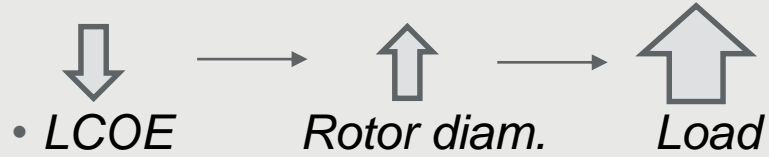
100GW of installed windpower.

Since the inaugural installation of a V10-30 kW turbine in Denmark in 1979, Vestas has installed over 67,000 turbines in around 80 countries across six continents.



Introduction

Market situation in Wind industry



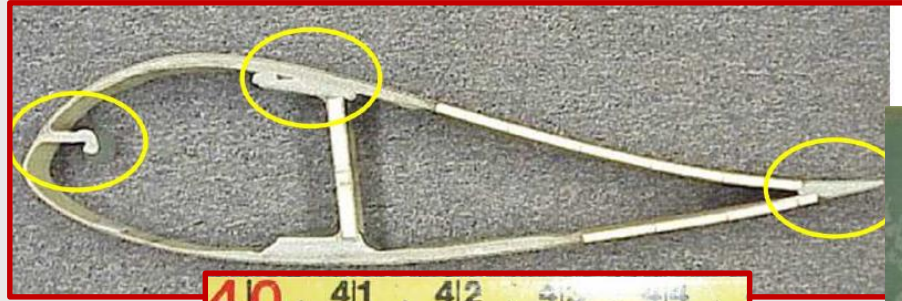
- *Blade production volume increased*
- *Decision against full automation of blade production.*
- *Quality control more important than ever*



Typical Flaws

Quality issues

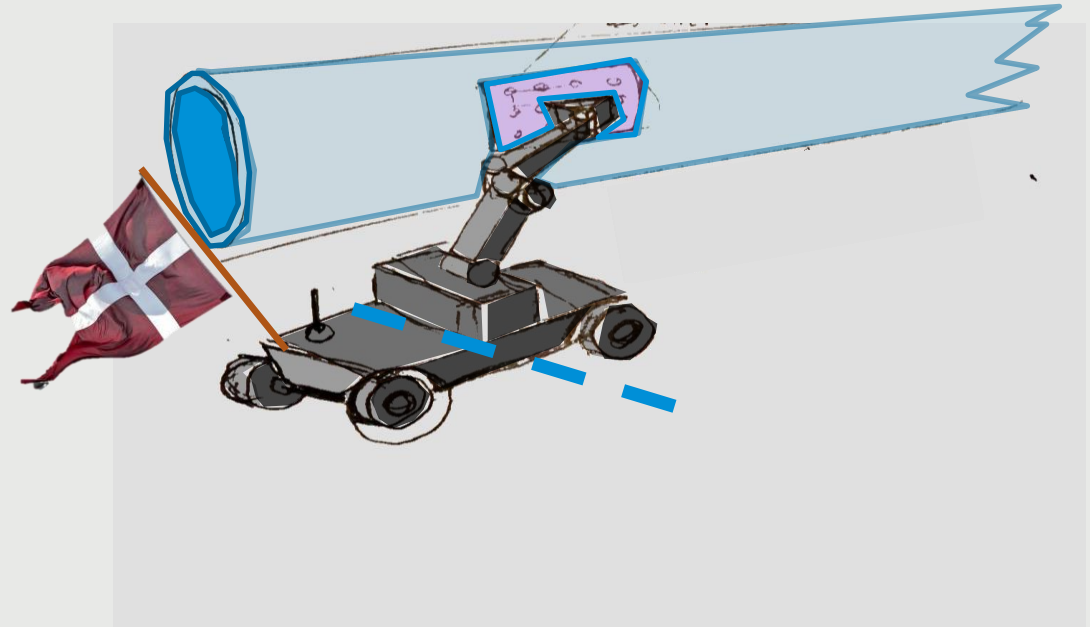
- Disbonds, Kissing bonds
- Air inclusion, snow flaking
- Wrinkles, ply waviness
- Delaminations
- etc



NDT Processes

Bond issues - NDT Process

- Production site: UT scanning with an array of low frequency transducers
- Scan time ~5hrs
- Evaluation done centralized at remote office.



NDT Challenges

Bond issues – evaluation challenges

Attenuation of signal

- Voids
- Material composition
- Coupling

Resolution of C-scan

- Wavelength

Interpretation of C-scan

- High turn over of people
- Ambiguities

NDT Challenges

Bond issues – Development focus

Attenuation of signal

- Voids
- Material composition
- Coupling

Efficient coupling to non-plane, non-smooth surfaces
Improved electronics/ transducer design

Resolution of C-scan

- Wavelength

Improve processing, eg. TFM for composite

Interpretation of C-scan

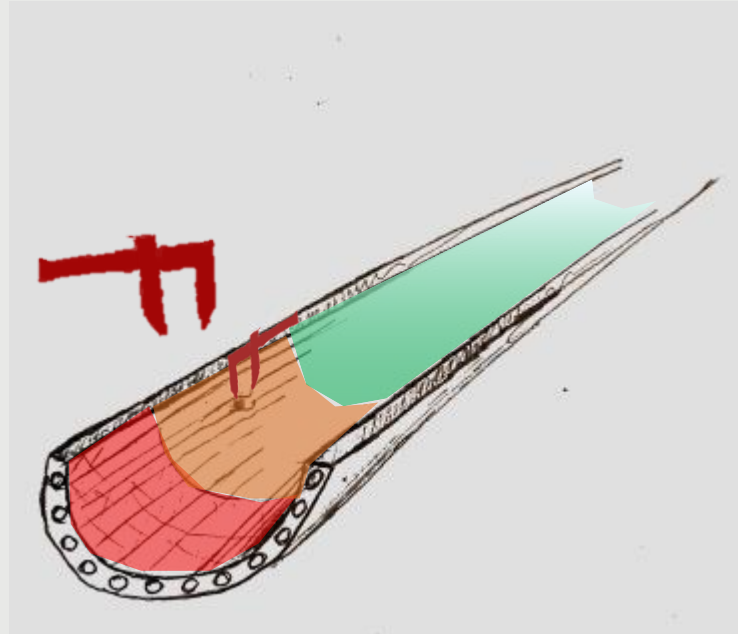
- High turn over of people
- Ambiguities

Artificial Intelligence, automatic processing

NDT Challenges

Wrinkle issues- evaluation challenges

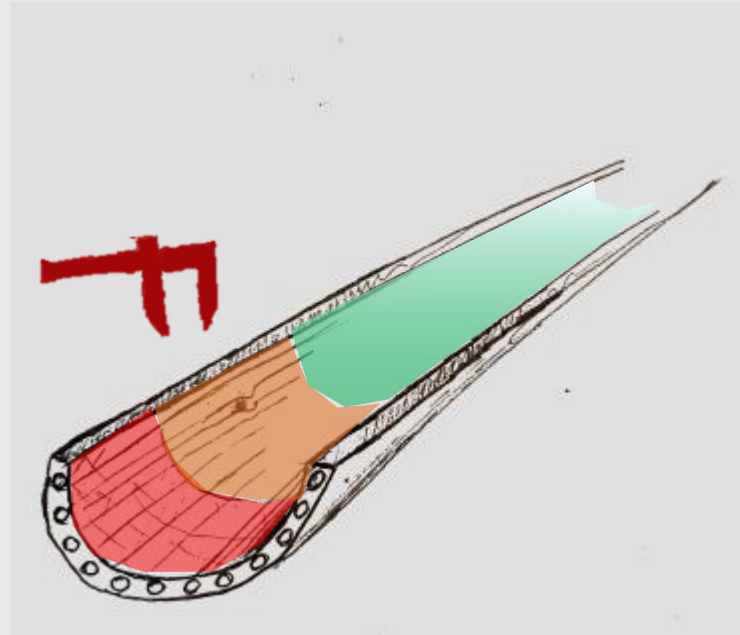
- Manuell investigation for 'bumps'
- Measuring size of 'bump'
- Comparing to zonal allowables



NDT Challenges

Wrinkle issues- evaluation challenges

- Surface bump not telling what's below
 - **False negative:** compromising blades integrity
 - **False positive:** Unnecessary repair costs
- Wrinkle invisible from surface
 - Operator not detecting wrinkle



NDT Challenges

Wrinkle issues- Development focus

- Surface bump not telling what's below
 - **False negative:** compromising blades integrity
 - **False positive:** Unnecessary repair costs
- Wrinkle invisible from surface
 - Operator not detecting wrinkle



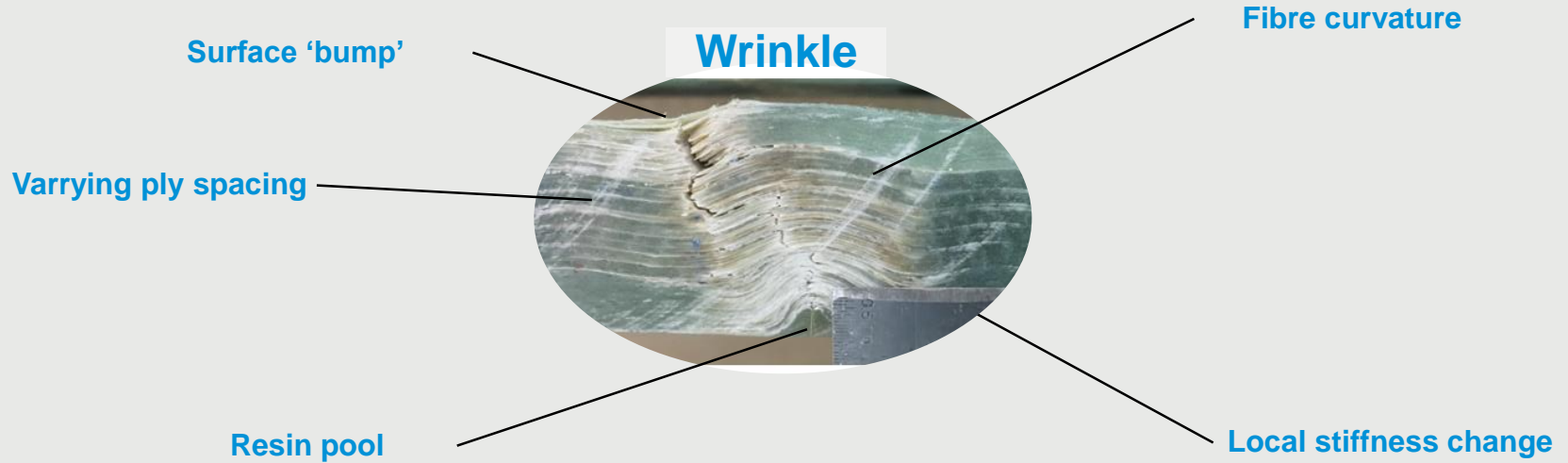
Evaluating ply curvature in laminate



Automated screening

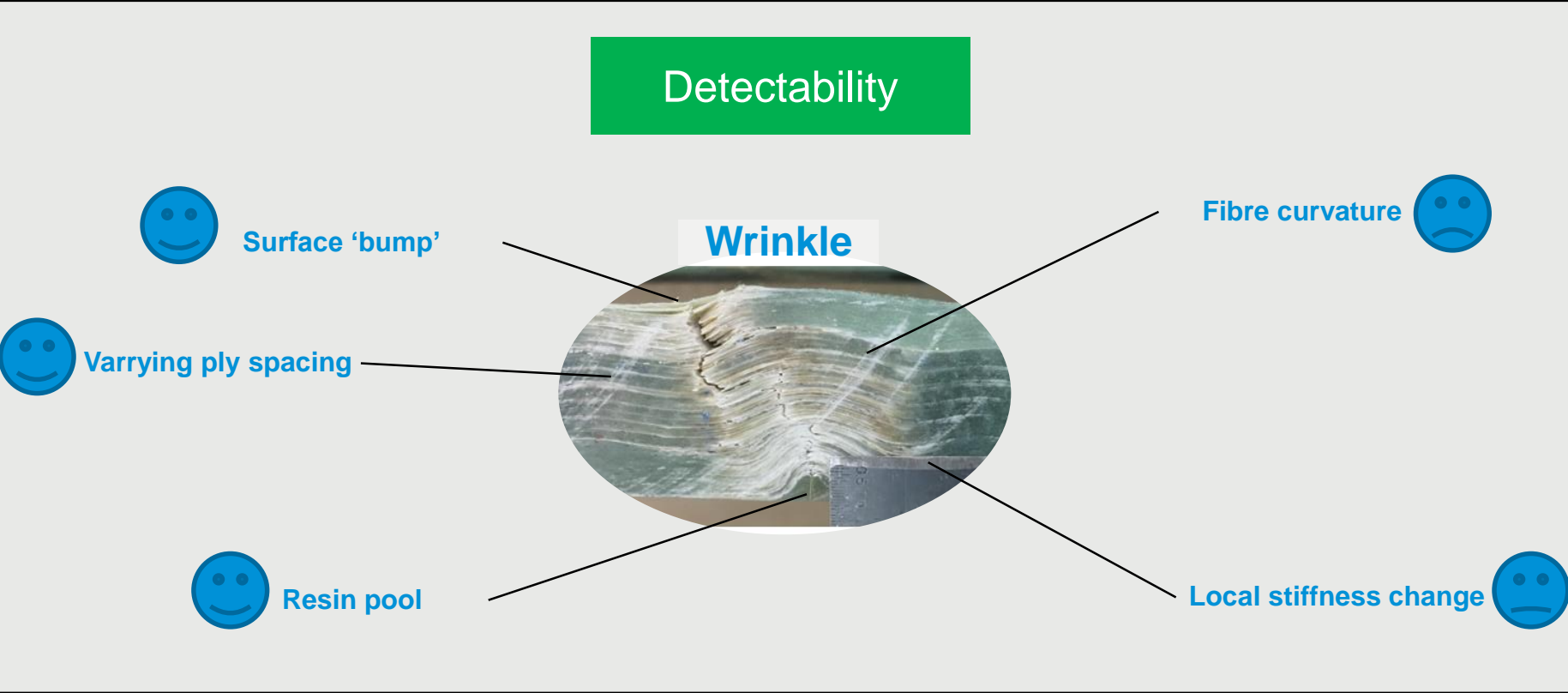
Case study - Evaluating ply curvature in laminate

Wrinkle features



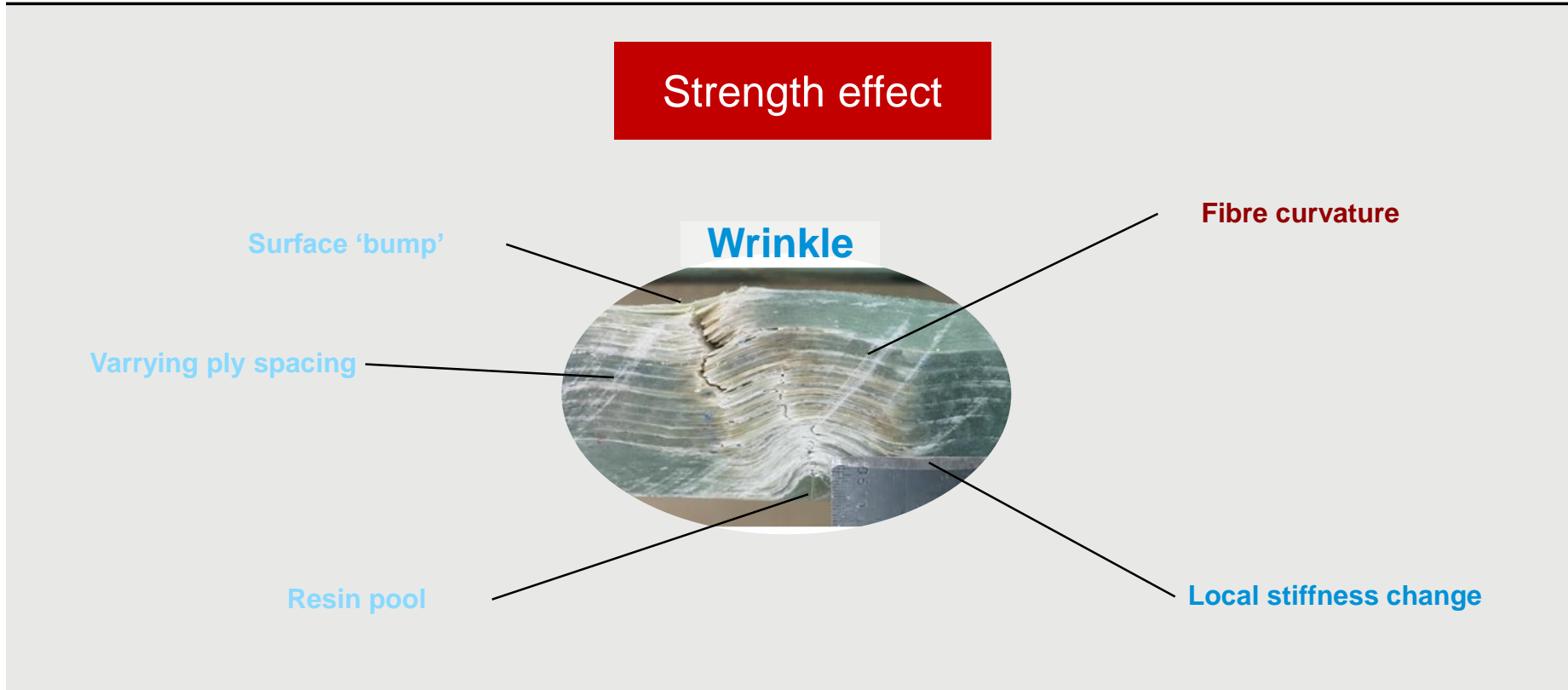
Case study - Evaluating ply curvature in laminate

Wrinkle features



Case study - Evaluating ply curvature in laminate

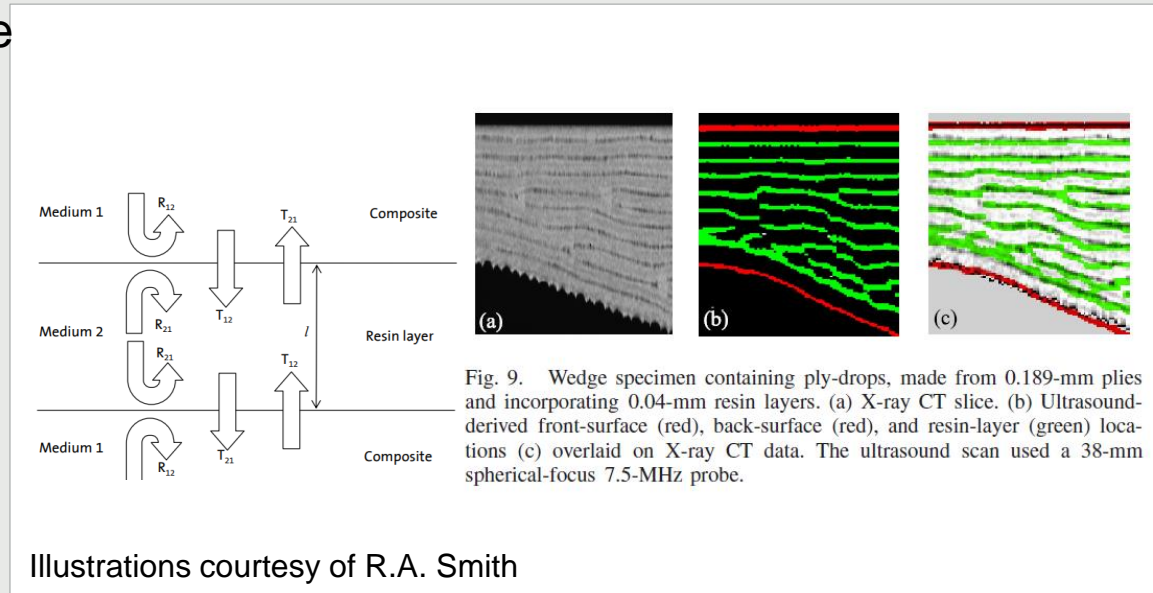
Wrinkle features



Case study - Evaluating ply curvature in laminate

University of Bristol – Prof. R.A. Smith and group work

- Ultrasound inspection
- Laminate periodic structure
- Tuning in resonant frequency
- Phase information stores ply mapping
- Successful in Aerospace
- Vestas collaborating with Bristol to adapt to Windgrade composite





Thank you for
your attention

• Robert Ernst
ROERN@VESTAS.COM